



FRAN HELICAL GEAR SPEED REDUCERS AND GEARMOTORS ■





FRAN HELICAL GEAR SPEED REDUCERS AND GEARMOTORS

MECHANICAL RATINGS

1750 RPM Input Speed (Service Factor 1)

OUTPUT SPEED	RATIO	HORSEPOWER	1	1.5	2	3	5	7.5	10	15	20	25
190	9.2	MODEL	1	1	1	2	2	2	3	3	4	5
		Torque (lb-in)	331	496	662	993	1654	2482	3310	4964	6619	8272
		Overhung Load (lb)	750	728	708	865	838	790	1608	1577	2035	4347
155	11.4	MODEL	1	1	1	2	2	2	3	3	4	5
		Torque (lb-in)	405	608	812	1217	2028	3042	4057	6085	8113	10126
		Overhung Load (lb)	770	739	728	913	889	829	1797	1749	2193	4651
125	14.1	MODEL	1	1	1	2	2	3	4	4	4	5
		Torque (lb-in)	503	754	1006	1509	2515	3773	5030	7545	10061	12575
		Overhung Load (lb)	810	790	759	937	909	1980	2420	2295	2218	4895
100	17.1	MODEL	1	1	1	2	2	3	4	4	5	5
		Torque (lb-in)	628	943	1258	1886	3144	4716	6288	9431	14971	15719
		Overhung Load (lb)	849	838	818	946	928	2072	2587	2420	5075	4994
84	20.9	MODEL	1	1	1	2	3	3	4	4	5	5
		Torque (lb-in)	748	1123	1497	2245	3743	5614	7485	11228	15006	18713
		Overhung Load (lb)	880	858	829	968	1982	2097	2504	2477	5267	5093
68	25.6	MODEL	1	1	1	2	3	3	4	4	5	5
		Torque (lb-in)	924	1387	1850	2774	4624	6935	9246	13870	18494	23114
		Overhung Load (lb)	909	889	849	1098	2248	2167	2633	2596	5344	5194
56	31.4	MODEL	1	1	1	2	3	3	4	4	5	5
		Torque (lb-in)	1123	1684	2245	3369	5614	8421	11228	16842	22456	28070
		Overhung Load (lb)	948	909	889	1118	2297	2198	2922	2787	5394	5293
45	38.4	MODEL	1	1	2	2	3	3	4	4	5	5
		Torque (lb-in)	1397	1397	2096	2795	4192	6986	10480	13972	20959	35305
		Overhung Load (lb)	1038	999	1155	1129	2336	2248	2985	2897	5474	5394
* 37	31.4	MODEL	1	1	1	2	2	3	3	4	5	-
		Torque (lb-in)	1699	2549	3399	5098	8497	12745	16994	25491	33988	-
		Overhung Load (lb)	1069	1049	1199	1168	2378	2297	3126	5623	5592	-
* 30	38.4	MODEL	1	1	2	2	3	3	4	5	5	-
		Torque (lb-in)	2096	3144	4192	6288	10480	15720	20959	31438	62878	-
		Overhung Load (lb)	1098	1069	1269	1228	2398	2336	3146	5683	5634	-

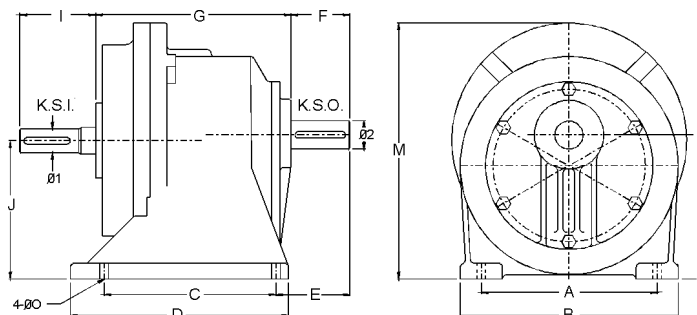
(*) Requires 1150RPM, 6poles motor



FRAN HELICAL GEAR SPEED REDUCERS AND GEARMOTORS

HORIZONTAL GEAR MOTORS

Models R1-R5



DIMENSIONAL TABLE

All dimensions in inches

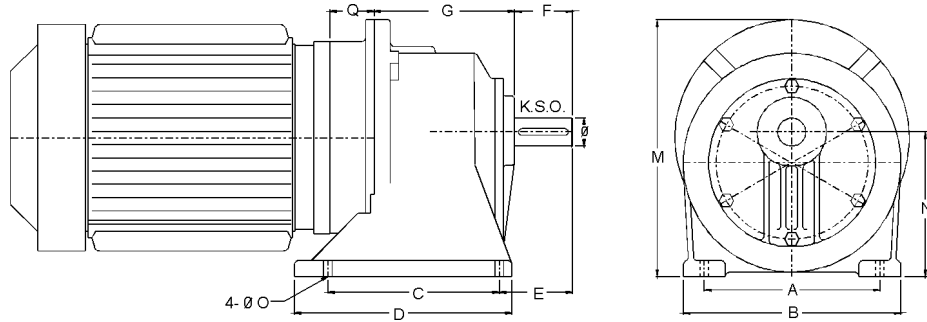
MODEL	A	B	C	D	E	F	G	I	J	K. S. Input	K.S. Output	M	N	ø 1	ø 2	ø O
R1	5.906	7.165	5.315	7.402	2.677	1.929	7.480	1.575	4.868	1/4 X 1/8 X 1.181	1/4 X 1/8 X 1.378	8.780	5.118	0.875	1.000	25/64
R2	8.268	10.315	8.071	10.315	3.465	2.756	8.780	2.559	6.504	5/16 X 5/32 X 2.165	3/8 X 3/16 X 2.165	11.890	6.780	1.125	1.313	33/64
R3	9.843	12.913	9.843	11.339	3.937	3.228	10.472	2.953	7.362	3/8 X 3/16 X 2.362	1/2 X 1/4 X 2.559	13.071	7.962	1.375	2.000	19/32
R4	11.417	15.276	13.386	15.669	5.512	4.331	12.913	3.543	8.858	3/8 X 3/16 X 2.756	5/8 X 5/16 X 3.543	15.512	9.608	1.625	2.250	25/32
R5	14.173	18.701	16.535	18.425	6.693	5.315	14.961	4.134	11.024	7/16 X 7/32 X 3.346	3/4 X 3/8 X 4.331	19.213	12.274	1.625	2.625	25/32



FRAN HELICAL GEAR SPEED REDUCERS AND GEARMOTORS

HORIZONTAL GEAR MOTORS

Models M1-M5



All dimentions in inches

DIMENSIONAL TABLE

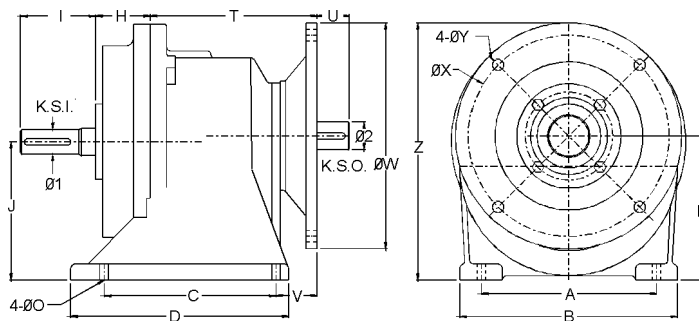
MODEL	A	B	C	D	E	F	G	K. S. Output	M	N	ø	ø O	Q
M1	5.906	7.165	5.315	7.402	2.677	1.929	5.512	1/4 X 1/8 X 1.378	8.780	5.118	1.000	25/64	2.559
M2	8.268	10.315	8.071	10.315	3.465	2.756	6.614	3/8 X 3/16 X 2.165	11.890	6.780	1.313	33/64	2.756
M3	9.843	12.913	9.843	11.339	3.937	3.228	8.110	1/2 X 1/4 X 2.559	13.071	7.962	2.000	19/32	2.756
M4	11.417	15.276	13.386	15.669	5.512	4.331	10.551	5/8 X 5/16 X 3.543	15.512	9.608	2.250	25/32	3.031
M5	14.173	18.701	16.535	18.425	6.693	5.315	12.008	3/4 X 3/8 X 4.331	19.213	12.274	2.625	25/32	3.150



FRAN HELICAL GEAR SPEED REDUCERS AND GEARMOTORS

VERTICAL SPEED REDUCERS

Models R1V-R5V



All dimintions in inches

DIMENSIONAL TABLE

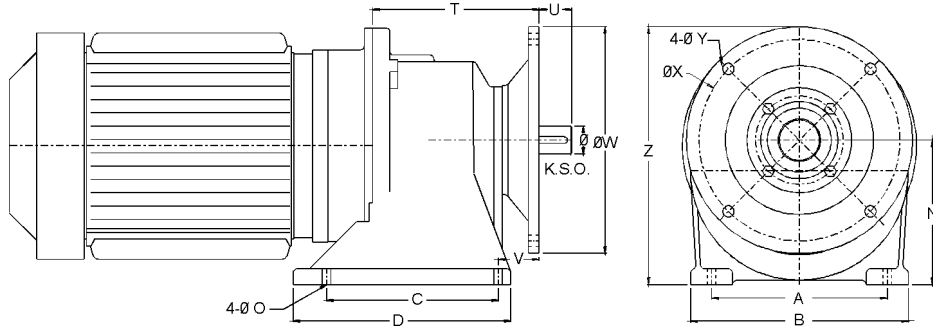
MODEL	A	B	C	D	H	I	J	K. S. Input	K. S. Output	M	N	Ø1	Ø2	Ø0	T	U	V	Z	ØW	ØX	ØY
R1V	5.906	7.165	5.315	7.402	1.967	1.575	4.868	1/4 X 1/8 X 1.181	1/4 X 1/8 X 1.378	8.780	5.118	0.875	1.000	25/64	6.693	0.748	1.929	9.055	7.874	7.087	13/32
R2V	8.268	10.31	8.071	10.31	2.165	2.559	6.504	5/16 X 5/32 X 2.165	3/8 X 3/16 X 2.165	11.89	6.780	1.125	1.313	33/64	7.874	1.496	1.969	12.12	10.63	9.449	17/32
R3V	9.843	12.91	9.843	11.33	2.362	2.953	7.362	3/8 X 3/16 X 2.362	1/2 X 1/4 X 2.559	13.07	7.962	1.375	2.000	19/32	9.646	1.693	2.244	13.18	10.63	9.449	17/32
R4V	11.41	15.27	13.38	15.66	2.362	3.543	8.858	3/8 X 3/16 X 2.756	5/8 X 5/16 X 3.543	15.51	9.608	1.625	2.250	25/32	12.40	2.480	3.031	16.10	14.17	12.99	21/32
R5V	14.17	18.70	16.53	18.42	2.953	4.134	11.02	7/16 X 7/32 X 3.346	3/4 X 3/8 X 4.331	19.21	12.27	1.625	2.625	25/32	13.78	3.543	3.150	18.70	14.17	12.99	21/32



FRAN HELICAL GEAR SPEED REDUCERS AND GEARMOTORS

VERTICAL GEAR MOTORS

Models M1V-M5V



All dimensions in inches

DIMENSIONAL TABLE

MODEL	A	B	N	D	T	U	V	K. S. Output	Z	N	Ø	Ø O	Ø W	Ø X	Ø Y
M1V	5.906	7.165	5.315	7.402	6.693	0.748	1.929	1/4 X 1/8 X 1.378	9.055	5.118	1.000	25/64	7.874	7.087	13/32
M2V	8.268	10.315	8.071	10.315	7.874	1.496	1.969	3/8 X 3/16 X 2.165	12.126	6.780	1.313	33/64	10.630	9.449	17/32
M3V	9.843	12.913	9.843	11.339	9.646	1.693	2.244	1/2 X 1/4 X 2.559	13.189	7.962	2.000	19/32	10.630	9.449	17/32
M4V	11.417	15.276	13.386	15.669	12.402	2.480	3.031	5/8 X 5/16 X 3.543	16.102	9.608	2.250	25/32	14.173	12.992	21/32
M5V	14.173	18.701	16.535	18.425	13.780	3.543	3.150	3/4 X 3/8 X 4.331	18.701	12.274	2.625	25/32	14.173	12.992	21/32

